



Great Britain - Queen Victoria



6th May 1840.

Letters in lower corners. Wm Small Crown. Imperf.



1841.

Letters in lower corners. Wm Small Crown. Imperf.



1847-1854.
Imperf.

Wm Block 'V R'



No Wm



No Wm



1854-1857.

Letters in lower corners.

Wm Small Crown. Perf 16.



Wm Small Crown. Perf 14.



Wm Large Crown. Perf 16.



Wm Large Crown. Perf 14.





Great Britain - King Edward VII



1902-1913.
Wm Imperial Crown. Perf 14.



Wm Large Anchor



Great Britain - Official Stamps

Army

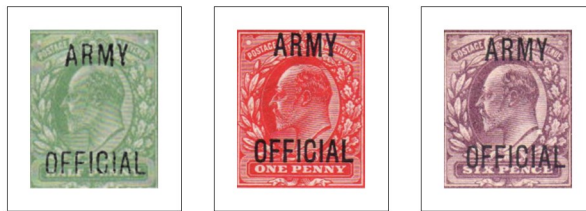
1896-1901.

Stamps of Queen Victoria overprinted 'ARMY OFFICIAL'.



1902.

Stamps of King Edward VII overprinted 'ARMY OFFICIAL'.



Government Parcels

1883-1900.

Stamps of Queen Victoria overprinted 'GOVT PARCELS'.



plate 13

plate 14



Great Britain - King George V

1924-1926.
Wm Block Cypher



23rd April 1924. British Empire Exhibition.
Dated 1924. Wm Block Cypher. Perf 14.

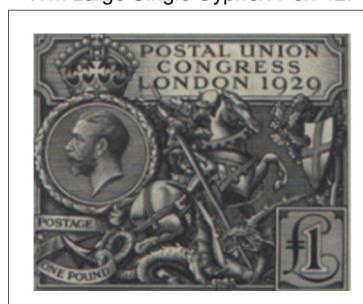
9th May 1925. British Empire Exhibition.
Dated 1925. Wm Block Cypher. Perf 14.



10th May 1929. Ninth Universal Postal Union Congress, London.
Wm Block Cypher. Perf 15 x 14.



Wm Large Single Cypher. Perf 12.





Great Britain - King George VI



13th May 1937. Coronation.
Wm Block 'GviR'



1937-1947.
Wm Block 'GviR'



Great Britain - Postage Due

1954-1955.

Wm Tudor Crown and 'E2R' (sideways).



1955-1957.

Wm St. Edward's Crown and 'E2R' (sideways).



Great Britain - Queen Elizabeth II

1959-1963.

Wm Multiple Crowns. Perf 11 x 12.



Carrickfergus Castle



Caernarvon Castle



Edinburgh Castle



Windsor Castle

7th July 1960. Tercentenary of Establishment of 'General Letter Office'.

Wm Multiple Crowns.



Postboy of 1660



Posthorn of 1660

19th September 1960. First Anniversary of European Postal and Telecommunications Conference.

Wm Multiple Crowns.



Conference Emblem



Conference Emblem

Decimal Machin Issues

2nd February 1977.
Printed in Gravure. Two phosphor bands. Perf 15 x 14.

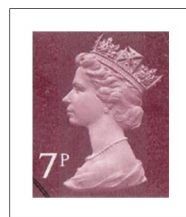


2nd February 1977.



13th June 1977.
Printed in Gravure. Perf 15 x 14.

right band



left band



centre band



Great Britain - Queen Elizabeth II

10th July 1974. Medieval Warriors.



Robert the Bruce



Owain Glyndwr

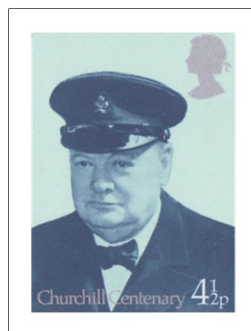


Henry V



The Black Prince

9th October 1974. Birth Centenary of Sir Winston Churchill.



Churchill in Royal Yacht Squadron Uniform



Prime Minister, 1940



Secretary for War and Air, 1919



War Correspondent, South Africa, 1899

Great Britain - Queen Elizabeth II

19th June 1997. British Aircraft Designers.



Reginald Mitchell and Supermarine
Spitfire MkIIA



Toy Chadwick and Avril Lancaster
MkI



Ronald Bishop and de Havilland
Mosquito B MkXVI



George Carter and Gloster Meteor
T Mk7



Sir Sidney Camm and Hawker
Hunter FGA Mk9

8th July 1997. 'All the Queen's Horses'. 50th Anniversary of the British Horse Society.



Carriage Horse and Coachman



Lifeguard Horse and Trooper



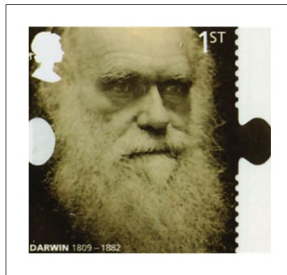
Household Cavalry Drumhorse
and Drummer



Duke of Edinburgh's Horse and
Groom

Great Britain - Queen Elizabeth II

12th February 2009. Birth Bicentenary of Charles Darwin (naturalist and evolutionary theorist) (2nd issue).
Booklet stamps.



Charles Darwin



Marine Iguana



Finches



Atoll



Bee Orchid



Orang-utan

10th March 2009. British Design Classics (3rd series).

Self-adhesive booklet stamps.



K2 Telephone Kiosk
(Sir Giles Gilbert Scott)



Routemaster Bus (design team
led by AAM Durrant)



Mini
(Sir Alec Issigonis)



Concorde
(Aérospatiale-BAC)



Mini Skirt
(Mary Quant)



Supermarine Spitfire
(R. J. Mitchell)

Great Britain - Queen Elizabeth II

19th September 2019. Royal Navy Ships.



Mary Rose, 1511 (Geoff Hunt)



HMS Queen Elizabeth, 2014
(Robert G Lloyd)



HMS Victory, 1765
(Monamy Swaine)



HMS Dreadnought, 1906
(H J Morgan)



HMS Warrior, 1860
(Thomas Goldsworth Dutton)



Sovereign of the Seas, 1637
(Paul Garnett)



HMS King George V, 1939
(Robert G Lloyd)



HMS Beagle, 1820
(John Chancellor)

Self-adhesive.



Great Britain - Queen Elizabeth II

26th November 2019. Star Wars (5th Issue).



Great Britain - Queen Elizabeth II

13th February 2019. 500th Death Anniversary of Leonardo da Vinci (1452-1519).



Great Britain - Post & Go Stamps

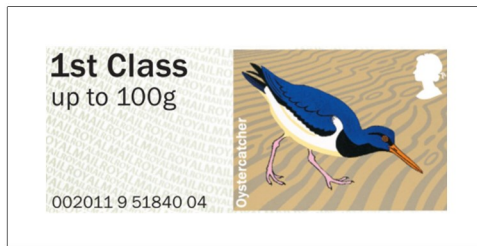
16th September 2011. Birds of Britain (4th series).



Puffin



Gannet



Oystercatcher



Ringed Plover



Cormorant



Arctic Tern

Great Britain - Northern Ireland

Decimal Currency

7th July 1971.

Two phosphor bands unless stated. Perf 15 x 14.

centre band



23rd January 1974.

Two phosphor bands unless stated. Perf 15 x 14.

centre band



6th November 1974.

Two phosphor bands unless stated. Perf 15 x 14.

centre band



21st May 1975.

Centre phosphor band.



Great Britain - Scotland

Decimal Currency

7th July 1971.

Printed in Gravure. Two phosphor bands unless stated. Perf 15 x 14.

centre band



23rd January 1974.

Printed in Gravure. Two phosphor bands unless stated. Perf 15 x 14.

centre band



6th November 1974.

Printed in Gravure. Two phosphor bands unless stated. Perf 15 x 14.

centre band



21st May 1975.

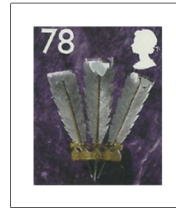
Printed in Gravure. Centre phosphor band. Perf 15 x 14.



Great Britain - Wales

27th March 2007.

Printed in Gravure. White borders. Two phosphor bands. Elliptical holes. Perf 15 x 14.



20th September 2007.

Printed in Litho. White borders. Two phosphor bands. Elliptical holes. Perf 15 x 14.



1st April 2008.

Printed in Gravure. White borders. Two phosphor bands. Elliptical holes. Perf 15 x 14.



29th September 2008.

Printed in Gravure. Two phosphor bands. Elliptical holes. Perf 15 x 14½.





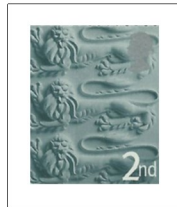
Great Britain - England



23rd July 2001.

Printed in Gravure with no borders. Two phosphor bands unless stated. Elliptical holes. Perf 15 x 14.

centre band



4th July 2002.

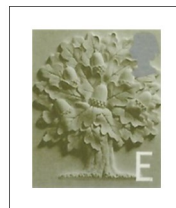
Printed in Gravure with no borders. Two phosphor bands. Elliptical holes. Perf 15 x 14..



14th October 2003.

Printed in Gravure with white borders. Two phosphor bands unless stated. Elliptical holes. Perf 15 x 14..

centre band



11th May 2004.

Printed in gravure with white borders. Two phosphor bands. Elliptical holes. Perf 15 x 14..

